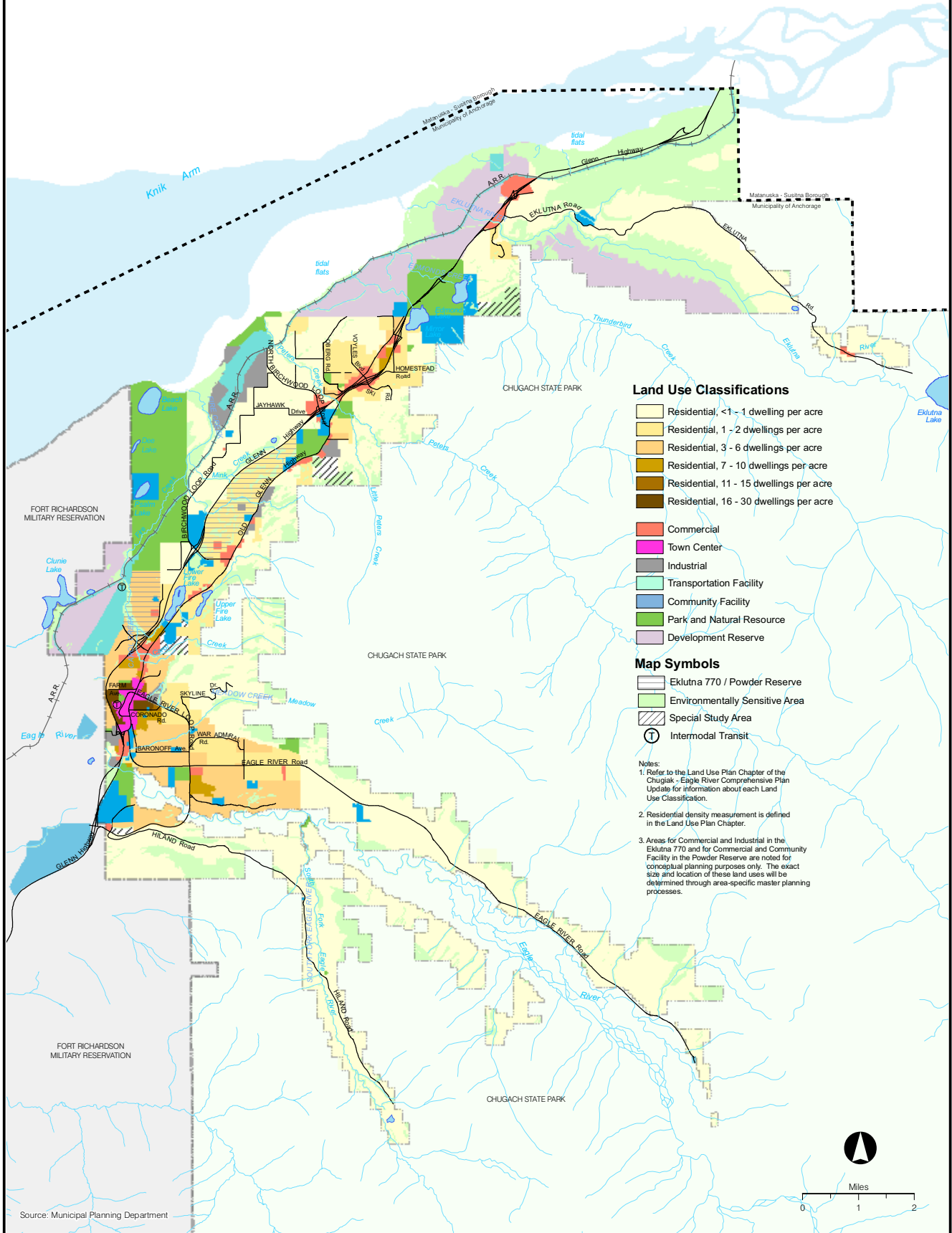


Land Use Plan



Land Use Classifications

- Residential, <1 - 1 dwelling per acre
- Residential, 1 - 2 dwellings per acre
- Residential, 3 - 6 dwellings per acre
- Residential, 7 - 10 dwellings per acre
- Residential, 11 - 15 dwellings per acre
- Residential, 16 - 30 dwellings per acre
- Commercial
- Town Center
- Industrial
- Transportation Facility
- Community Facility
- Park and Natural Resource
- Development Reserve

Map Symbols

- Eklutna 770 / Powder Reserve
- Environmentally Sensitive Area
- Special Study Area
- T Intermodal Transit

- Notes:
1. Refer to the Land Use Plan Chapter of the Chugiak - Eagle River Comprehensive Plan Update for information about each Land Use Classification.
 2. Residential density measurement is defined in the Land Use Plan Chapter.
 3. Areas for Commercial and Industrial in the Eklutna 770 and for Commercial and Community Facility in the Powder Reserve are noted for conceptual planning purposes only. The exact size and location of these land uses will be determined through area-specific master planning processes.

